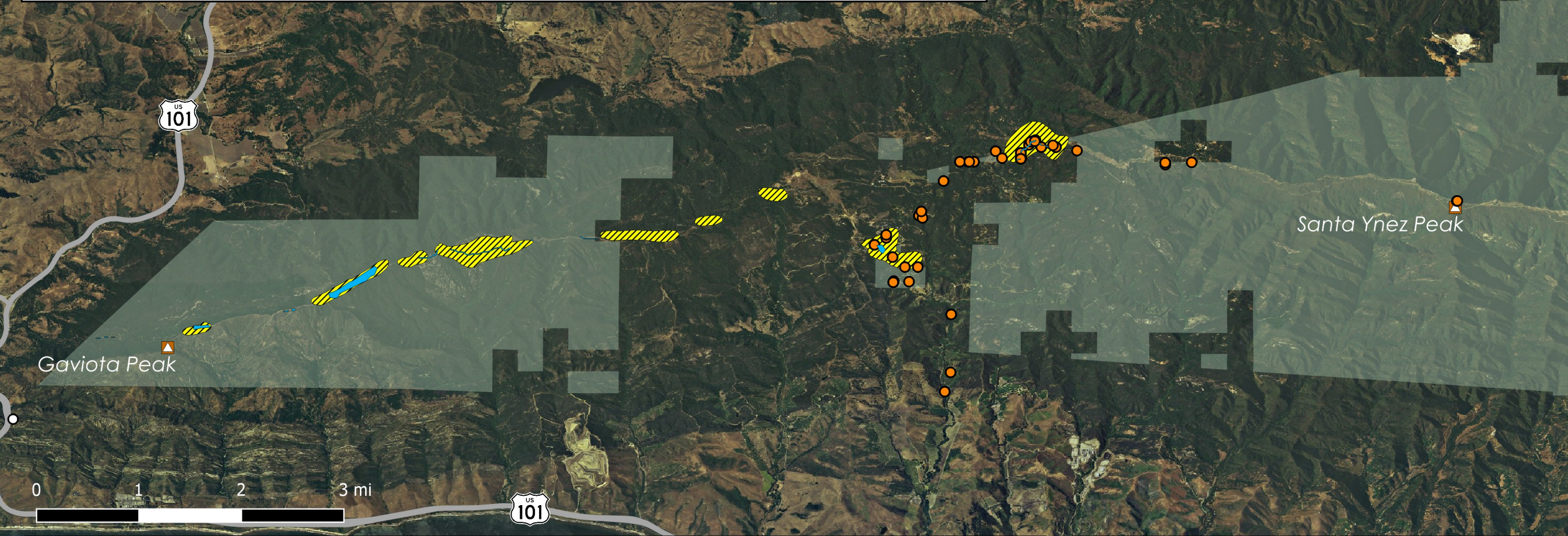


Refugio Manzanita (*Arctostaphylos refugioensis*) Observations



- U.S. Forest Service-Administered Land
- Mountain Peak
- City
- U.S. or State Highway
- Interstate Highway

- Refugio Manzanita Observations**
- U.S. Forest Service (1997)¹
 - U.S. Forest Service (2010, 2014)²
 - Consortium of California Herbaria³

1 Redrawn from *Sensitive Plants of the Los Padres National Forest* (Danielson, K. 1997)

2 Redrawn from survey data collected by the U.S. Forest Service in 2010 and 2014.

3 Data provided by the participants of the Consortium of California Herbaria (ucjeps.berkeley.edu/consortium/)

